

# Guidelines for Pula Medical Aid Fund **Covid-19** Testing, Hospitalisations and Vaccines





# Covid-19 Vaccine and Hospitalisations cover Commitment from the Fund



Pula Medical Aid Fund (the Fund) recognises and supports the Government of Botswana’s effort to provide the COVID-19 vaccine to all citizens in the fight against this pandemic. The pandemic has had catastrophic impact and has disrupted normal life as we knew it. To this end, Pula Medical Aid Fund applauds the efforts of the Botswana Government and the State President, His Excellency Dr. Mokgweetsi Eric Keabetswe Masisi in the valiant fight against the pandemic. The Fund has seen it befitting to play a part in assisting the Government.

This correspondence therefore serves to inform you, our valued stakeholder that the Fund has approved funding for the COVID-19 Vaccine for the members and dependants of the Fund who are covered by Pula Medical Aid Fund, subject to the vaccine being available in Botswana. Our commitment stems from our mission, of promoting the wellbeing and health of our members by ensuring access to healthcare. This is especially important during these challenging times. The Fund is aware of the financial, health and social impact the pandemic might have brought to you and your loved ones and consequently this commitment is a means to mitigating the consequences of this pandemic.

In addition to our commitment to fund Vaccines for COVID-19, we wish to also assure you of continued access to healthcare services for our members and their loved ones for all other services as per the Fund Rules and such other arrangements we currently have in place. At the start of the pandemic in 2019, we committed to providing cover in the following areas:

- 100% cover for Covid-19 hospital admissions with a waiver of the co-payment and VAT.
- 100% cover for Covid-19 related diagnostics, labs tests, x-rays, and other investigations.

We reiterate this commitment and assure you that funds have indeed been set aside to provide for this. The 100% cover is subject to Covid-19 tariffs as agreed with service providers.

COVID-19 Vaccines are an important tool in curbing the pandemic. However, we encourage our stakeholders, members and their families to continue following all the current guidelines and protocols from health authorities. Furthermore, the Fund urges its members and stakeholders to protect themselves and others by wearing a mask, maintaining a social distance from others, avoiding crowds, adhering to curfew rules, infection control, washing hands with soap and water or cleaning hands regularly with sanitizers.

For further engagements or enquiries regarding the above commitment, please do not hesitate to contact the Fund Office and Administrators, Associated Fund Administrators Botswana. The Fund remains open for further discussions on how best to assist our members with other interventions.

Pula Medical Aid Fund appreciates your continued support.

‘COVID-19 Vaccines are an important tool in curbing the pandemic. However, we encourage our stakeholders and their families to continue following all the current guidelines and protocols from health authorities’.

**DR. KHUMOETSILE MAPITSE**  
PRINCIPAL OFFICER  
PULA MEDICAL AID FUND

# Guidelines for Pula **Covid-19** Rapid (Antigen) Testing Cover on an out patient basis

Pula Medical Aid Fund will cover Covid-19 Rapid (Antigen) Testing for all its beneficiaries effective 10 MARCH 2021

All beneficiaries who wish to test should note the following:

1. Covid-19 Rapid (Antigen) Testing Cover shall be extended to all Pula beneficiaries, and each beneficiary shall be eligible for two (2) Covid-19 Rapid (Antigen) Tests per annum.
2. Covid-19 rapid (antigen) testing will be covered for all beneficiaries who are deemed to have been exposed to the coronavirus primarily through contact with a person(s) who has been diagnosed as Covid-19 positive.
3. For purposes of this Covid-19 benefit, "person-to-person" contact shall mean: having been in close proximity (less than 1m) of a Covid-19 positive person for more than 15 minutes
4. Beneficiaries with suspected Covid-19 symptoms are eligible for the Covid-19 Rapid Antigen Testing cover. Pula will cover the full cost of the Rapid (Antigen) Testing.
5. The Covid-19 Rapid (antigen) Testing may be accessed directly through accredited/approved pathology laboratories, testing centres and/or through approved practitioners. That is testing may be done without first consulting a medical doctor.
6. All Covid-19 Rapid (antigen) Testing facilities are encouraged to register with the Pula Administrators in order to facilitate smooth processing of their claims.
7. All results of the Rapid (Antigen) Tests are to be reported/communicated to the relevant health authorities (e.g. District Health Management Team - DHMT) by the testing facility in order to facilitate contact tracing and/or related monitoring.
8. Pula beneficiaries will be exempted from the 10% co-payment and VAT. In essence, beneficiaries wishing to get tested should not be required to pay 10% or VAT at point of service; since Pula will pay cost of testing directly to the service provider.

# Guidelines for Pula **Covid-19** Rapid Antigen or PCR Testing Cover for hospital admissions

PULA will cover the cost of:

1. Rapid Antigen testing, in full, prior to admission as may be required by the admitting facility (i.e. hospital), subject to agreed tariffs for same.
2. For patients being investigated for Covid-19, presenting with symptoms, the initial test is a Rapid Antigen Test. A positive test then confirms the diagnosis of Covid-19 and with no need for a PCR test. Where the rapid test returns a negative test despite being symptomatic, a PCR test may be carried out to confirm the status of the patient. Both tests in this instance will be covered by the Fund.
3. For all admissions for elective procedures, Pula will cover the cost of the Rapid Antigen Test used to determine the Covid-19 status of the beneficiary prior to the admission. A PCR is not indicated and will not be reimbursed.
4. Reimbursement for Covid-19 testing will include co-payment and VAT, consequently, Pula beneficiaries are not expected to pay any co-payment or VAT at point of service, subject to agreed tariffs.



# Hospital Admission of **Covid-19** positive cases

Covid-19 positive cases may be admitted into hospital subject to national protocols and for purposes of the Pula Covid-19 cover, the following shall apply:

1. Asymptomatic and mildly symptomatic patients
  - a) As per national protocols such patients may not be admitted but must be requested to isolate at home. Where a patient's condition deteriorates whilst isolating at home, such patient may be admitted
2. Patients with severe / serious symptoms
  - a) Patients may be admitted and such admissions should follow the "normal admission process" wherein the admission will be subjected to pre-authorization and case management.
  - b) Admission Length of Stay (LOS) shall be determined on the basis of clinical condition/presentation and not on the basis of a patient being Covid-19 positive. That is: LOS should be aligned to the resolution of clinical condition/presentation per normal admissions (e.g. admission for general medical condition) and where these are resolved patient may be discharged to isolate at home
3. Patients requiring specialist services that are not available at designated Covid-19 treating centres
  - a) Patients may be admitted subject to normal admission process and LOS and level of care (LOC) which shall be determined based on the condition/presentation of the patient.
4. LOS for admission should be determined based on clinical condition/presentation of the patient and NOT Covid-19 status.
  - a) The cost of admission due to serious/severe symptoms of Covid-19 (i.e. Covid-19 as primary cause of admission) shall be borne by PULA, inclusive of co-payment and VAT, but shall be subject to: preauthorization, case management, agreed tariffs and Fund Rules.

# Covid-19 Testing Centres for Rapid Test

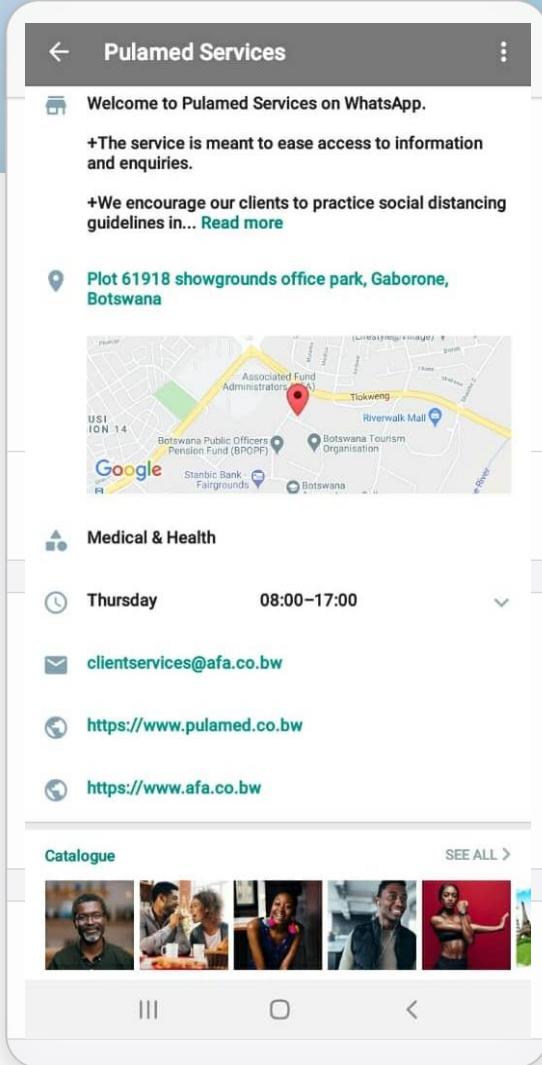
(List will be updated on an on-going basis)



Practice Name	Town
Med-Lass	Gaborone
Diagnofirm (Pty) Ltd	Gaborone Ghanzi, Francistown, Selebi Phikwe, Palapye, Kazungula, Maun, Lobatse & Kanye
Tati River Laboratory	Francistown
Medi - Path Medical Laboratory	Palapye
Quali Medical Laboratory	Lobatse
Viapath Medical Laboratory	Selebi-Phikwe
Northern Pathology Services	Francistown
Labscroll Medicals	Tutume
Mmoloki Medical Laboratories	Gaborone
Lab-Care Diagnostics	Francistown
Clinipath Laboratories	Gaborone
Lenmed Bokamoso Private hospital - Pathology	Gaborone
Sidilega Private Hospital- Pathology	Gaborone
Gaborone Private Hospital (GPH)	Gaborone
Medlane Health Care	Gaborone
MRI	Gaborone and Maun
Optimum Health Laboratory	Gaborone
Francistown Academic Hospital- Pathology	Francistown
Orapa Debswana Hospital	Orapa
Jwaneng Debswana Hospital	Jwaneng



# Contact Us



SAVE our number to  
your contacts  
**+267 3650 555**

---

Send us a 'Hi'  
on **+267 3650 555**

from a registered mobile number and explore  
our new Self Help Contact Centre.

---

# Contact Us

## Associated Fund Administrators Botswana (Pty) Ltd

Associated Fund Administrators Botswana is the Administrator of Pula Medical Aid Fund

### PHYSICAL ADDRESS

Plot 61918 Showgrounds  
Office Park,  
Gaborone  
Botswana

[www.pulamed.co.bw](http://www.pulamed.co.bw)

GPS Coordinates  
-24.6764025,25.9250579

### EMAIL ADDRESS



[Managedcare@afa.co.bw](mailto:Managedcare@afa.co.bw)

P O Box 1212  
Gaborone  
Botswana  
Africa

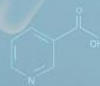
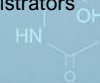


### CALL CENTRE

Administrators



(+267) 3650 555



CORONAVIRUS | COVID-19 |

